



 **SpaCrest**  
HOT TUBS

 **VISION**  
HOT TUBS™



Owner's Manual



*Thank you for purchasing your new spa from Spa Crest Manufacturing!*

Please read this entire manual before powering up your new spa. This manual contains all the information you will need to properly operate and maintain your spa. Please review all of the safety information before using your spa for the first time.

## ***Record of Ownership***

Date Purchased \_\_\_\_\_

Model \_\_\_\_\_

Serial # \_\_\_\_\_

Dealer Name \_\_\_\_\_

Phone # \_\_\_\_\_

\* Serial number is located near the filter in the equipment area.

**Spa Crest Inc.**  
**5989 Highway 129 South**  
**Claxton, GA 30417**  
**912-739-7137**  
**www.spacrest.com**  
**www.visionhottubs.com**

# TABLE OF CONTENTS

- Safety Instructions ..... 3
- Glossary of Spas Terms..... 6
- Electrical requirements ..... 11
- Site preparation..... 14
- Water chemistry terms..... 16
- Spa water maintenance..... 18
- Regular maintenance ..... 20
- Identifying your Model ..... 23
- Vision Models..... 25
- Spa Crest series 2 Models..... 29
- Spa Crest series 1 Models..... 31
- Spa Crest series LX Models..... 32
- Diagnostic Messages ..... 33
- Stereo system..... 35
- Trouble Shooting Guide..... 36
- Vision Warranty ..... 37
- Spa Crest Warranty ..... 39
- Warranty Registration Card ..... 41

# SAFETY INSTRUCTIONS

## Save These Instructions

When installing and using this electrical equipment, basic safety precautions should be observed including the following:

### Important Safety Instructions

**1. WARNING.** To reduce the risk of injury, do not permit children to use this product unless they are closely supervised at all times.

**2. DANGER - RISK OF CHILD DROWNING.** Extreme caution must be exercised to prevent unauthorized access by children. To avoid accidents, insure that children cannot use a spa or hot tub unless they are closely supervised at all times.

**3.** A pressure wire connector is provided on the surface of the control box inside the spa to permit connection of a minimum No. 8 AWG solid copper bonding wire between this point and any metal equipment, metal enclosures of electrical equipment, metal water pipe or conduit within 5 feet (1.5M) of the unit.

**4. DANGER - RISK OF ELECTRIC SHOCK.** Install spa at least five (5) feet (1.5M) from all metal surfaces. A spa may be installed within five (5) feet (1.5M) of metal surfaces if, in accordance with the National Electrical Code, each metal surface is permanently connected by a No. 6 AWG (8.4mm) solid copper conductor attached to the wire connector on the terminal box. A grounding plug is provided for this purpose.

**5. DANGER - RISK OF INJURY.** The suction fittings in this spa are sized to match the specific water flow created by the pump. Should the need arise to replace the suction fitting or the pump be sure that the flow rates are compatible.

*\*NOTE: Never operate the spa if the suction fittings are broken or missing. Never replace a suction fitting with one rated less than the flow rate marked on the original suction fitting.*

**6. DANGER -** To reduce the risk of injury to persons, do not remove suction grate. Suction through drains and skimmers are powerful when the jets in the spa are in use. Damaged covers can be hazardous to small children and adults with long hair. Should any part of the body be drawn into these fittings, turn off the spa immediately. As a precaution, long hair should not be allowed to float in the spa.

7. Install spa so that water can be easily drained out of the compartment containing electrical components so as not to damage equipment. Also, when installing spa, allow enough room to access for servicing. Contact your local dealer for their requirements.

## **8. WARNING - TO REDUCE THE RISK OF INJURY:**

**(A)** Always enter and exit a spa slowly.

**(B)** Do not use the spa alone.

**(C)** Before entering the spa, always measure the water temperature with an accurate thermometer. Tolerance of water temperature regulating devices can vary as much as plus/minus 5° F (3° C).

**(D)** Persons suffering from obesity or with a medical history of heart disease, diabetes, high or low blood pressure or circulatory system problems should consult with their physician before using the spa.

**(E)** Since excessive water temperature has a high potential for causing fetal damage during early months of pregnancy, pregnant or possibly pregnant women should limit spa water temperatures to 100° F (38° C).

**(F)** Excessive water temperature can be dangerous. The water in the spa should never exceed 104° F (40° C). Water temperatures between 100° and 104° F are considered safe for a healthy adult. Lower water temperatures are recommended for extended use (exceeding 10 minutes) and for young children. Long exposures at higher temperatures can result in hyperthermia.

**(G)** Children's body temperature can increase more rapidly than adults in the same water with elevated temperatures (above 99° F). Children should spend less time in water above body temperature than adults.

**(H)** The use of a spa while under the influence of alcohol, drugs and/or medication may lead to unconsciousness with the possibility of drowning.

*\*NOTE: Persons on medication should consult with their physician before entering the spa since some medication may induce drowsiness while other medication may affect heart rate, blood pressure and circulation.*

## **HYPERTHERMIA**

Hyperthermia occurs when the internal temperature of the body reaches a level several degrees above the normal body temperature of 98.6° F.

## **THE SYMPTOMS OF HYPERTHERMIA INCLUDE:**

- Dizziness
- Fainting
- Drowsiness
- Lethargy
- Increase in Internal Body Temperature

## THE EFFECTS OF HYPERTHERMIA INCLUDE:

- Unawareness of Impending Hazard
- Failure to Perceive Heat
- Failure to Recognize the Need to Exit Spa
- Physical Inability to Exit Spa
- Fetal Damage in Pregnant Women
- Unconsciousness Resulting in a Danger of Drowning

9. People with infections, sores or the like should not use the spa. Warm and hot water temperatures may allow the growth of infectious bacteria if not properly disinfected.

10. **DANGER - RISK OF ELECTRIC SHOCK.** Do not permit any electric appliance, such as a light, telephone, radio or television, within five (5) feet of the spa. Never operate any electrical appliances from inside the spa or while wet.

11. **“CAUTION - RISK OF ELECTRIC SHOCK.**

**Do not leave the CD compartment open.”**

**“CAUTION - RISK OF ELECTRIC SHOCK.**

**Replace components only with identical components.”**

The CD player controls are not to be operated while inside the spa.

**“WARNING - PREVENT ELECTROCUTION. Do not connect any auxiliary components (for example, additional speakers, headphones, additional audio/video components etc.) to the system.”**

These units are not provided with an outdoor antenna. An external antenna or booster maybe purchased at any electronics store to fit any unique situations. Do not service this product yourself as opening or removing covers may expose you to dangerous voltage or other hazards. Refer all servicing to qualified service personnel. If the power supply /supply cord(s) are damaged, water is entering the CD compartment, or any other electrical equipment compartment area, the protective shield is showing signs of deterioration, or there are signs of other potentially hazardous damage to the unit, turn off the circuit breaker from the wall and refer servicing to a qualified service personnel. The unit should be subjected to periodic routine maintenance once every quarter to make sure that the unit is operating properly.

12. **SAVE THESE INSTRUCTIONS.**

# GLOSSARY OF SPA TERMINOLOGY

**JETS** - Your new Spa Crest or Vision spa features a variety of jet styles. All jets, regardless of style return the water to the spa. Air is mixed with the water by using the air controls creating a gentle to most vigorous massage. Water flow is adjusted by simply turning the outer face of the full sized jets. Your Spa Crest or Vision spa will have a combination of pulsating, rotating, and directional adjustable jets. The Vision line features the Acupressure Foot Therapy System, reverse molded neck and shoulder therapy jets, and a waterfall.

## VISION SPA JETS

---



### NECK JETS

Mini Storm Massage jet. This 3" adjustable and interchangeable jet spins and pulsates. The jet can be removed by turning it counter-clockwise. To replace the jet push inward and clockwise until it clicks into place.



### SHOULDER JETS

Mini Storm Massage jet. This 3" adjustable and interchangeable jet features a directional nozzle. The jet can be removed by turning it counter-clockwise. To replace the jet push inward and clockwise until it clicks into place.



### POWER STORM DIRECTIONAL JETS

This 5" adjustable and interchangeable jet features a directional nozzle. The jet can be removed by turning it counter-clockwise. To replace the jet push inward and clockwise until it clicks into place.



### POWER STORM MASSAGE

This 5" adjustable and interchangeable jet features an internal spinner to deliver a low pressure soothing massage. The jet can be removed by turning it counter-clockwise. To replace the jet push inward and clockwise until it clicks into place.



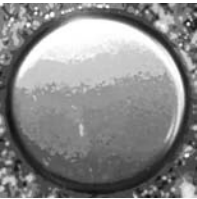
### **CLUSTER JETS**

These smaller jets are strategically placed for maximum muscle therapy.



### **ACUPRESSURE FOOT THERAPY**

A jet with 14 individual nozzles. Larger spas feature 2 of these jets and the smaller spas feature one.



### **AIR INJECTORS**

Chrome caps in the seat of most Vision Spas tied to the blower to inject air into the spa for an invigorating massage.



### **JET DIVERTER VALVE**

Located on the topside of the spa, this valve physically diverts the flow of water from one jet zone of the spa to the foot massage jets. Be sure that no sand or particles are brought into the spa as they will cause the diverter to seize up. It is best to turn the diverter valve only when the pump is turned off.

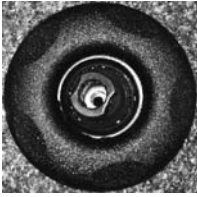


### **WATERFALL ON/OFF VALVE**

Located on the topside of the spa, this valve adjusts water flow to the waterfall.

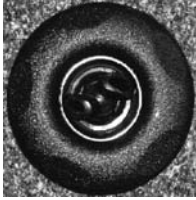
# SPA CREST JETS

---



## **POLY STORM DIRECTIONAL**

This 4.5" adjustable and interchangeable jet features a directional nozzle. The jet can be removed by turning it counter-clockwise. To replace the jet push inward and clockwise until it clicks into place.



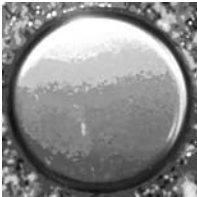
## **POLY STORM TWIN ROTO**

This 4.5" adjustable and interchangeable jet features 2 adjustable nozzles which spin to deliver a low pressure soothing massage. The jet can be removed by turning it counter-clockwise. To replace the jet push inward and clockwise until it clicks into place.



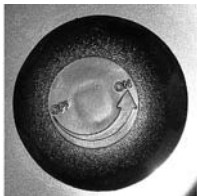
## **CLUSTER JETS**

These smaller jets are strategically placed for maximum muscle therapy.



## **AIR INJECTORS**

Chrome caps in the seat of every Series 2 model tied to the blower to inject air into the spa.



## **NECK JETS ON/OFF VALVE**

Round knob used to control intensity of the neck jets (if installed).

## OTHER COMPONENTS

---



### **AIR CONTROL VALVES**

These are located around the top of your spa. You may increase or decrease the force of your jets by opening or closing the air control valves. Typically, one dial controls the air to water ratio mix to one group of jets. When not in use the air controls should be kept in the closed position, as air bubbles tend to cool the water.

### **TOPSIDE CONTROL PANEL**

You may safely control all functions from inside or outside your spa using the Topside Control Panel. This Panel is used to control the water temperature, pumps, the spa light, automatic filtration cycles and other advanced functions. The digital display will give you constant temperature readout and will notify you in case of certain malfunctions. Several user programmable functions are also available.

### **SECONDARY REMOTE CONTROL**

All Vision Spas have a second 4 button control panel opposite the main control panel. This control allows the user to control the jet therapy and lights while remaining in his/her seat.

### **EQUIPMENT ACCESS PANEL**

Located inside the cabinet panel below the main Topside Control Panel, this area houses the major components responsible for the spas operation. Those components include the pumps, heater, control panel box, Ozonator, and LED light system (if applicable). Pump and equipment placement may vary by model.

### **ACCESS PANELS**

These are located on all four sides of the spa. All of the panels are removable should service be required.

### **DRAIN HOSE BIB**

The hose bib is located under spa cabinet in the equipment area. Attach a garden hose, if desired. It will take most spas 3-4 hours to drain using the hose bib.

### **SPA LIGHT**

Your spa light is designed for safety and is located in the interior wall of your spa. The on/off switch is located on the topside of the control panel.

## **EQUIPMENT CONTROL SYSTEM**

This houses the wiring and electrical components necessary to operate the spa.



### **SLICE VALVES**

These valves are used by service personnel to shut off water to the heater, main pump system and secondary pump system so that the water does not need to be drained should the spa require service. \*NOTE - Slice valves must be completely open during normal operations (pull handles up).

### **THERAPY PUMP(S)**

These pumps are the main pumps that control the jets in the spa. They will vary in horsepower and speeds by model.

### **CIRCULATION PUMP**

This produces water flow through the heater in the spa and provides the water flow necessary to actuate the heater and ozone generator. This fractional HP pump runs for 24 hours of efficient filtration and heating. This pump is standard on all Spa Crest Series 2 and Vision spa models.

### **PUMP UNION**

These are used by service personnel to easily remove the pumps.

### **HEATER UNION**

These are used by service personnel to easily service the heater.

### **OZONATOR**

Your ozonator will operate in conjunction with your filtration system and circulation pump (if applicable). Ozone reduces the amount of sanitizing chemicals needed in the spa. The ozonator will deactivate when any other control function is manually activated and will reactivate after one hour of inactivity. The ozonator is standard on all models and optional on the 301 Marcus.

### **BLOWER**

Standard on all Spa Crest series 2 and most Vision Spa Models. The blower forces air through the air injectors.

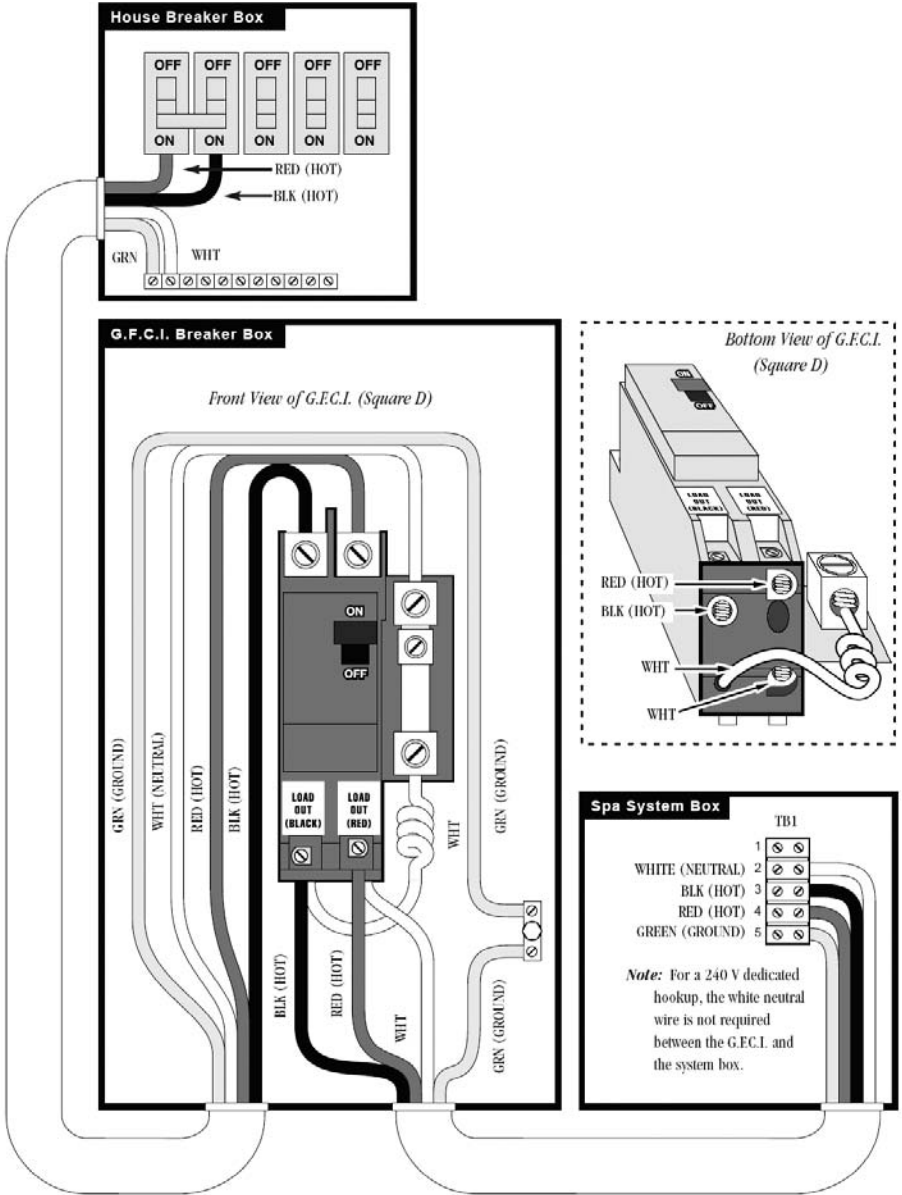
# ***ELECTRICAL INSTALLATION REQUIREMENTS***

## **HAVE YOUR ELECTRICIAN READ THE FOLLOWING INFORMATION BEFORE INSTALLATION BEGINS**

Electrical connections made improperly, or the use of wire gauge sizes for incurring power which are too small, may continually trip the breaker, may damage the internal electrical controls and components, may be unsafe and in any case will void your warranty. It is the responsibility of the spa owner to ensure that electrical connections are made by a qualified electrician in accordance with the National Electric Code and any local and state electrical codes in force at the time of installation. These connections must be made in accordance with the wiring diagrams found inside the control box. Make sure that power is not applied while performing any electrical installation. A bonding lug has been provided on the electrical equipment pack to allow connection to local ground points. The ground wire must be at least 6 AWG copper wire and must be connected securely to a grounded metal structure such as a cold water pipe. All Spa Crest and Vision equipment packs are wired for 240 VAC. (Models 601 LX, 501 LX and the 301 may be wire 120 VAC. Please refer to 120/240 Volt systems p.13) The only electrical supply for your spa must include a 50 AMP GFCI or circuit breaker to open all non-grounded supply conductors to comply with section 422-20 of the National Electrical Code. The disconnect must be readily accessible to the spa occupants, but installed at least five feet from the spa. A Ground-Fault Circuit Interrupter (GFCI) must be used to comply with section 680-42 of the National Electrical Code. A ground fault is a current leak from any one of the supply conductors to ground. A GFCI is designed to automatically shut off power to the spa equipment when a fault current is detected in a piece of equipment.

**Power hook-up to the spa must be 240 volt 3 wire plus ground (6 AWG copper).** Route the cable into the equipment area for final hook-up to terminals inside the control panel. The spa must be hooked up to a "dedicated" 240 volt, 50 amp breaker and GFCI. The term "dedicated" means the electrical circuit for the spa is not being used for any other electrical items (patio lights, appliances, garage circuits, etc.). If the spa is connected to a non-dedicated circuit, overloading will result in "nuisance tripping" which requires resetting of the breaker switch at the house electrical panel.

# WIRING SCHEMATIC - 240 VOLT SPA HOOK-UP



\* Actual wiring of GFCI will vary by manufacturer of GFCI. The GFCI shown is a Square D.

Improper wiring of GFCI may result in permanent damage to spa system box. Repair /replacement of spa system box are not covered under warranty when damage results from improper wiring.

# 120/240 VOLT SYSTEMS

**Attn:** All electrical connections must be made by a licensed electrician. Failure to do so will void the spa warranty. Optional 120/240 Volt Models 601 LX / 501 LX / 301

*Special Note:* 601 LX, 501 LX, and 301 Models are pre-wired for 240 Volt installations from the factory.

## Electrical Requirements for 120 Volt

The spa must be connected to a "dedicated" 120 Volt, 15 amp ground faulted circuit. The term "dedicated" means the electrical circuit is not being used for any other electrical items (patio lights, appliances, garage circuits, etc.). If the spa is connected to a non-dedicated circuit, overloading will result in the breaker tripping which requires resetting of the breaker switch at the house electrical breaker panel. The dedicated circuit must be properly wired; that is, it must have a 15 amp circuit breaker in the housebreaker panel, number 12 AWG or larger wire (including the ground wire) and the correct polarity throughout the circuit.

**NEVER CONNECT THE SPA TO AN EXTENSION CORD!**

For 120 Volt models with 15 feet of usable power cord (this is the maximum length allowed by Underwriters Laboratory and the National Electric Code.) When your electrician is installing the electrical outlet, please make sure it is located no further away than 10 feet from the equipment compartment door. For your safety, the National Electrical Code requires that the 15 amp single receptacle electrical outlet be located no closer than five (5) feet from the spa.

*Special Note:* Heater needs to be converted from 240V to 120V when wiring spa 120V. – See wiring diagram on equipment pack for 120 Volt conversions. Switch needs to be switched from 50 amps to 20 amps.

# ***SITE PREPARATION / GENERAL GUIDELINES***

Portable spa installation is simple when properly planned. To that end it is important that you read the following information carefully and consult with your Spa Crest dealer.

1) Access - The actual dimensions of your new spa will determine the amount of space that is needed in moving the spa from curbside to its final installation area. Be sure to measure side yard dimensions, gates or doors and vertical obstructions such as roof overhangs and overhead cables. Any other space limiting obstacles such as trees or shrubs must be evaluated.

2) If the spa is being installed indoors, dimension limitations such as stairs, ceilings walls and door openings must be taken into consideration. Please have your Spa Crest dealer or delivery service review site or installation plans prior to delivery.

3) Surface/Pad Requirements - When your new spa is filled with water and bathers, it may weigh as much as several tons. It is imperative that the base beneath the spa can support the actual weight. The spa must be on a uniformly firm, continuous, and level surface. The recommended foundation is a concrete pad with a minimum thickness of four (4) inches with steel reinforcement bars crossed throughout the pad.

## **IMPORTANT**

When installing your spa indoors or on a wood deck or balcony, the same load requirements must be met. Total load may be as much as 90 pounds per square foot. You should speak with a qualified contractor or your local building department to confirm that your surface is adequate for supporting a spa. Be sure to locate your spa so that equipment remains above grade and is not subject to flooding. The equipment side(s) of the spa must be accessible in the event that future service is needed. Periodical maintenance checks require entry into the equipment bay. When possible, it is wise planning for the future to leave access to all sides of the spa in the event your spas plumbing requires maintenance. Your spa warranty does not cover the cost of providing access for service.

## **GENERAL CONSIDERATIONS FOR OUTDOOR INSTALLATION**

Again, proper planning will increase your total enjoyment factor with your new spa. Listed below are some additional items to consider when planning your installation.

- How spa will complement landscaping and vice versa
- View from inside spa and view of spa from inside of home
- Exposure to sunlight and shading from trees
- Privacy

- Getting to spa from house and return
- Proximity to dressing rooms and bathrooms
- Storage for spa chemicals
- Local building codes (if applicable)
- Power cable

## GENERAL CONSIDERATIONS FOR INDOOR INSTALLATION

Installing your spa indoors creates an entirely different set of considerations. Here again, with proper planning, no matter what room your spa goes in, it will be your favorite room.

- Work with your Spa Crest dealer and contractor to insure all local building, electrical and plumbing codes are met
- Plan for a floor drain to drain off excess water or for draining and cleaning your spa
- A ventilation fan may be necessary due to high humidity created by your spa
- Finished material in your spa room should also be capable of withstanding increased humidity

## INSTALLATION INSTRUCTIONS

- 1.) Put spa in final position that allows for access to equipment of spa components.
- 2.) Remove front side panel (This is the side where the main topside control panel is located) so electrical can be hooked up to the spa system pack.
- 3.) Be sure all pump and heater unions are secure. Each pump has 2 unions and the heater has 2 unions. A newly delivered spa may have loose unions caused in transporting the spa. Check that all slice valves are open, in the up position. Again, the slice valves may become closed during transportation of the spa.
- 4.) Fill the spa. Recommended water level is 6" from top of spa.
- 5.) Turn the power on to the spa. Spa will go through its priming mode. This lasts approximately 5 minutes.
- 6.) Be sure the jets in your spa are opened by turning large jets counterclockwise. The smaller cluster jets can not be closed. Note: The acupuncture foot therapy system can only be turned on or off by the diverter valve.
- 7.) Adjust water chemistry according to the instructions provided in the "Spa Water Maintenance Section" (p. 18).
- 8.) Your spa water will heat approximately 5°F - 8°F per hour, for all 240V spas. This varies depending on the size of the spa. On 120V spas, the water will heat approximately 1 1/2°F per hour.
- 9.) Enjoy your spa!!!

# WATER CHEMISTRY TERMS YOU SHOULD KNOW

**1. PARTS PER MILLION, OR PPM:** This is a form of measurement used in most pool or spa chemical readings. Best described as any one million like items of equal size and make up, next to one unlike item, but of equal size. This would be one part per million.

**2. AVERAGE SIZE SPA:** What is it? The Association of Pool & Spa Professionals (APSP) states; 350 to 400 U.S. gallons is average. As a general rule, chemical dosages are the same for any spa between 100 and 500 U.S. gallons. Spas over 500 U.S. gallons the dosage would be double. Less than 100 U.S. gallons would be on a case by case basis.

**3. TOTAL ALKALINITY:** This is a measurement of the ability of the water to resist changes in pH. Put another way, it is the water's ability to maintain proper pH. Total alkalinity is measured in parts per million from 0 to 400 plus, with 80 to 150 ppm being the best range for spas. With low alkalinity, the pH will flip, or change back and forth, and be hard to control. With high alkalinity it becomes extremely difficult to change the pH.

**4. PH OR POTENTIAL HYDROGEN:** This is a measurement of the active acidity in the water, or it is the measurement of the concentration of active hydrogen ions in the water. The greater the concentration of active hydrogen ions, the lower the pH. pH is not measured in parts per million, but on a scale from 0 to 14, with 7 being the neutral. In spas when ever possible, a measurement between 7.2 and 7.8 is best. Whenever possible, it should be between 7.4 and 7.6. With low pH, the results can be corroded metals, stained fiberglass or acrylic, eye / skin irritation, rapid chlorine or bromine loss, and total alkalinity destruction. With high pH, the results can be cloudy water, eye / skin irritation, scale formation, poor chlorine or bromine efficiency.

**5. SHOCKING:** This is when you add either extra chlorine (super chlorinate) by raising the chlorine level above 8 ppm, or add a non-chlorine shock (potassium monoperoxysulfate or potassium monopersulfate) to burn off the chloramines or bromamines. A non-chlorine shock acts by releasing oxygen in the water, which serves the same function as chlorine. The advantage to using non-chlorine shock is you can enter the water within 15 minutes after shocking. Using chlorine, you must wait until the total chlorine reading is below 5 ppm. One thing to remember, a non-chlorine shock will not kill bacteria or disinfect.

**6. SEQUESTERING:** This can be defined as the ability to form a chemical complex which remains in solution, despite the presence of a precipitating agent (i.e. calcium and metals). Common names for sequestering chemicals are; minquest, stain and scale control, metal-x, spa defender, spa metal gone, (etc.).

**7. FILTRATION:** Filters are necessary to remove particles of dust, dirt, algae, etc. that are continuously entering the water. If the spa is not operated long enough each day for the filter to do a proper job, this puts a burden on the chemicals, causing extra expense. Filtration time will depend on the spa size pump and filter size, and of course, bather load. A spare cartridge should be kept on hand to make it easy to frequently clean the cartridge with out the need for a long shut down. This will also allow the cartridge to dry out between usages, which will increase the cartridge life span as much as twice. Replace the cartridge when the pleats begin to deteriorate. Cartridge cleaning should be done a minimum of once a month. More often with a heavy bather load.

**8. SANITIZERS:** This is what kills the germs and bacteria that enter the water from the environment and the human body.

- Chlorine - Only one type is good for spa use: Sodium dichlor which is a granule, fast dissolving, and pH neutral
- Bromine - Two types of tablets: Hydrotech & Lonza. Bromine is a slow dissolve chemical and may take a few days to develop a reserve or reading in the water.

*\*Note: Spa Crest spa Products are not designed to be used with Biquanides. Due to adverse effects from these types of products, the warranty of the spa may be void.*

**9. TOTAL DISSOLVED SOLIDS (TDS):** Materials that have been dissolved by the water. i.e. like what happens when you put sugar in coffee or tea.

**10. USEFUL LIFE OF WATER (IN DAYS):** Water should be drained at least once every 180 days.

**11. DEFOAMER:** Foaming may be caused by body oils, cosmetics, lotions, surface cleaners, high pH or algaecides as well as other organic materials. Low levels of calcium or sanitizer can also cause foaming. Also, double rinse your bathing suits as they will hold residual soap after being washed.

**12. CALCIUM HARDNESS:** Water that is too hard (over 250 ppm) can promote scale formation in components and on spa surface. Water that is too low (below 180 ppm) may also shorten the life of metal components on the spa.

# SPA WATER MAINTENANCE - START-UP

1. Read the spa owners manual first and consult with the dealer for their recommendations.
2. Begin filling the spa with fresh water. Do not use softened water.
3. Using test strips or a test kit, test for total alkalinity, and adjust if necessary to between 80 to 150 ppm using the pH / alkalinity increaser or decreaser 1oz. at a time. Wait 15 minutes, retest, and adjust if necessary. The pump should be running on high speed during this time without air controls open.
4. Using test strips or a test kit, test for pH, and adjust if necessary to within the 7.2 and 7.8 range using the pH / alkalinity increaser or decreaser 1/2oz. at a time. Wait 15 minutes, retest, and adjust if necessary. The pump should be running on high speed during this time, without air controls open.
5. If any foam develops, add a defoamer at the base of the problem area. Use only enough defoamer to get rid of the foam. This is usually one or two drops. Do not pour large amounts of defoamer into water.

**\*Most spas manufactured by Spa Crest have an ozone generator installed. Ozone reduces the amount of sanitizer needed in the spa. Check with your dealer for their recommendations.**

# ***SPA WATER MAINTENANCE - SCHEDULE***

1. Test and adjust total alkalinity weekly to between 80 to 150 ppm using the pH / alkalinity increaser or decreaser 1oz. at a time. Wait 15 minutes, retest and adjust if necessary. The pump should be running on high speed during this time with the air controls closed.
2. Test and adjust pH weekly to within the range of 7.2 to 7.8 using the pH / alkalinity increaser or decreaser 1/2oz. at a time. Wait 15 minutes, retest and adjust if necessary. The pump should be running on high speed during this time with the air controls closed.
3. If your spa does not have an ozonator test and adjust sanitizer level weekly. Add chlorine following label directions to maintain a free chlorine level of 1 to 3 ppm. If using bromine, adjust feeder to maintain a total bromine level of 3 to 5 ppm. Add bromine tablets to the dispenser if necessary, following label directions.
4. If water is cloudy you may add a water clarifier or enzyme product following label directions.
5. Use a small amount of defoamer only if necessary.
6. Filters should be rinsed once a week. Depending on usage a filter cleaner may also need to be used. To extend the life of the filter allow filters to dry completely before reinstalling. Purchasing a second set of filters from your dealer will make this process easier.

**With a spa, you are working with a small volume of hot water, which causes chemicals to have a shorter life span, and bacteria, along with other things, to grow faster. A spa is less forgiving than a pool, and requires that whatever is put into it have a pH as close to neutral as possible. That is why only chemicals made for spas should be used.**

**After initial start-up, spa testing needs to be done once a week. After each use or once a week dose spa with sanitizing chemicals according to label instructions.**

# REGULAR MAINTENANCE

*Note: These are areas that will require the spa owner to perform routine maintenance. These are not areas covered under the warranty of the spa.*

## CLEANING JETS

Some of the jets in your spa can individually be turned on/off. If any of these jets become hard to turn, it will be necessary to remove the jet to clean it as grit/sand and mineral deposit may be present. Jets are removed by turning the collar counter clockwise and then pulling out the jet. The smallest jets are fixed and cannot be removed. If debris is blocking water movement you may stick a piece of wire (i.e. clothes hanger or a bottle brush) into the jet opening to remove any debris.

## TO CLEAN REMOVABLE JETS

Place the jet(s) in a bucket, fully immerse in white vinegar. Let the jet(s) soak overnight and then rinse with water. Reinstall the jet(s). It may also be necessary to clean the grit/deposit from the white jet body using an old toothbrush.

## CLEANING DIVERTER VALVES

Vision Spas have a diverter valve. Due to mineral deposits and grit/sand that may get into the internal parts of the diverter valve, it may become hard to turn or freeze up totally. In this case, it is necessary to remove the handle and cap of the diverter valve. Before proceeding, make sure the power to the spa is turned off. Remove handle and turn the cap counter clockwise. It may be necessary to put a clean rag over the cap and turn it with a wrench. Remove cap and the internals of the valve. Wipe down the interior of the valve and soak the white internals in white vinegar. Rinse the diverter internals and reassemble. Be sure that the o-ring is seated properly and is not pinched or it will leak. In the future, it is helpful to turn the diverter valve only when the pump is not on. Cleaning your diverter valve should occur every time you drain your spa.

## DRAINING AND CLEANING YOUR SPA

There is a hose bib under the spa cabinet. Attach a garden hose to the bib and open. It will take most spas 3-4 hours to drain. You may also use a small submersible pump to drain it faster. It is recommended that you drain and clean your spa at least every 180 days. With a soft cloth, wipe down the spa surface with a non-abrasive cleaner such as "409," "Fantastik" or equivalent. Do not use paper towels. Be sure to rinse residue from spa surface. If your spa has developed an oily or chalky residue at the waterline it may require special treatment. Consult your dealer.

Before refilling your spa be sure the drain is closed securely. Fill the spa with water. Be sure water level is 6" below top of spa. Refer to spa start-up section to correct water chemistry.

**NOTE: IF YOUR SPA IS GOING TO BE LEFT EMPTY FOR PROLONGED PERIODS, DO NOT REPLACE COVER DIRECTLY ON SURFACE OF SPA. PLACE 2"-3" BLOCKS BETWEEN COVER AND SPA. THIS ALLOWS FOR ADEQUATE VENTILATION OF COVER AND SPA.**

## CARE OF YOUR SPA COVER

Always cover your spa when not in use. This will greatly reduce energy consumption and will cause spa water to heat more rapidly. Water loss and chemical usage will also be reduced.

- Be sure to lock down all straps on cover after each use to prevent wind damage.
- Do not allow spa to sit uncovered in direct sunlight. This may cause damage to exposed surfaces of spa and possible discoloration of spa fittings.
- Periodically hose off both sides of spa cover for maximum life of cover. Once a month use a vinyl cleaner and conditioner on the vinyl portion of your cover. Rinse residue off.

*NOTE: The cover warranty is provided through the cover manufacturer and not through Spa Crest. You will need to mail the cover warranty back to the cover manufacturer.*

## FILTER CLEANING

The filter in your spa is one of the most important components of your spa. Its not only essential for clean water, but also for extending the life of the spa equipment. Your filter elements must be cleaned regularly (once a month on average) with normal spa use. With heavy use, they will need to be cleaned more often.

- Turn spa off or put spa in standby mode. Never have the spa running when removing your filters as debris can be pulled through into the equipment causing unwarranted damage.
- Remove telescoping skimmer by turning counterclockwise.
- Remove basket and rinse out debris.
- Remove filter element.
- With a garden hose, spray each element under pressure. Periodically, the elements need to be soaked in a filter cleaner compound. Check with your dealer for details on cleaning and/or filter replacement recommendations.
- Replace filter elements.
- Replace basket.
- Replace telescoping skimmer by turning clockwise
- Be sure water level is adequate.
- Turn spa on.

## CARE OF YOUR SPA PILLOWS

- Your spa pillows need to be rinsed periodically to remove any chemical residue. This should help to eliminate pillows becoming stiff and discolored.
- If spa is not to be used for a period of time, pillows should be removed. Pillow life will be extended.

## WINTERIZING YOUR SPA

Many people find they enjoy using their spa more in the winter than any other time. Your spa is designed to be used year round in any type of climate. \*However, if you decide you don't want to use your spa in the winter, you must drain it and follow the winterizing steps listed below:

- 1.) Drain your spa completely using the hose bib or use an inexpensive submersible pump that you can buy from your dealer or your local hardware store.
- 2.) Use a shop vac to get all standing water out of your unit.
- 3.) Remove access panels from equipment area.
- 4.) Loosen all pump and heater unions
- 5.) Remove square winterizing plug from the face of the pump(s).
- 6.) Using your shop vac in a blowing mode, insert the hose into the nozzle of each jet and blow the trapped water from the lines into the interior of the spa.
- 7.) After this is completed, use the shop vac to remove any standing water in the spa and in the equipment area.
- 8.) Repeat this process until all water is removed.
- 9.) Clean the spa with a soft cloth and a non-abrasive cleaner (409, Fantastik, Glass Plus, etc.).
- 10.) Replace access panels.
- 11.) Cover spa to prevent water from entering the spa.

*\*Disclaimer: Spa Crest does not recommend winterizing your spa. If you choose to do so, any damage that may result is not covered under the spa warranty.*

# IDENTIFYING YOUR SPA

If your control panel looks like this:



You have a Vision Hot Tub.

Please go to page 25 for information about your spa.

If your control panel looks like this:



~ OR ~

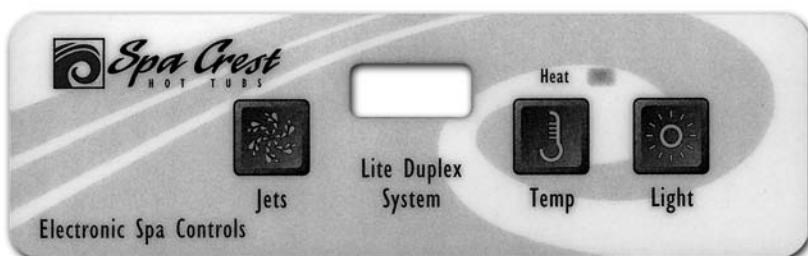


You have a Spa Crest series 2.

Please go to page 29 for information about your spa.

## IDENTIFYING YOUR SPA

If your control panel looks like this:



You have a Spa Crest series 1.  
Please go to page 31 for information about your spa.

If your control panel looks like this:



You have a Spa Crest series LX.  
Please go to page 32 for information about your spa.

# VISION HOT TUB MODELS

## Initial Start-up

When your spa is first actuated, it will go into priming mode (after displaying some configuration information). The Priming mode will last for up to 4 minutes and then the spa will begin to heat and maintain the water temperature in the Standard mode. You can exit Priming mode early by pressing "Warm" or "cool".

## Icon Legend



**Heat Icon** – Indicates different stages of heating.



**Light Icon** – Indicates light is on



**Jets Icon** – Spins fast on high speed; spins slowly on low speed.





**Blower Icon** – Indicates blower is on

## Temp Set (80°F - 104°F / 26.0°C - 40.0°C)



The factory preset temperature is set at 100°F / 37.5°C. The last measured temperature is constantly displayed on the LCD.

*Note that the last measured spa temperature displayed is current only when the pump has been running for at least 2 minutes.*

## Warm / Cool

Press the "Warm"  or "Cool"  button once to display the set temperature. Each time either button is pressed again, the set temperature will increase or decrease depending on which button is pressed. After three seconds, the LCD will automatically display the last measured spa temperature.

## Setting Time & Filter Cycles

When time hasn't been programmed, the TIME icon flashes. To set the time, press "Time"  then "Mode/Prog" . Use the "Warm" and "Cool" buttons to adjust the time. Press Mode/Prog when the desired time is displayed. After the time has been set, it will ask to set filter start and stop times for filter 1 & 2. The filters start and stop times default settings are 8:00am-10:00am & 8:00pm-10:00pm. Because your unit has a 24hr circulation pump your filter start and stop times do not need to be adjusted. At the start time of each filter cycle your spa will come on for 4 minutes to purge the system. If you wish to change these settings to a different time follow the directions for setting time. The filter times can be changed after the time has been set.

## Mode/Program ✖

This button is used to switch between standard, economy, and sleep modes. Press "Mode/Program" to enter mode programming, press "Cool" to cycle through to desired mode (LCD flashed until confirmed), then press "Mode/Program" to confirm selection.

**Standard mode** maintains the desired temperature. Note that the last measured spa temperature displayed is current only when the pump has been running for at least 2 minutes. The "STANDARD" icon will display until the mode is changed.

**Economy mode** heats the spa to the set temperature **only during filter cycles**. The "ECONOMY" icon will display until mode is changed. Pressing "Massage 1" while in Economy mode puts the spa in Standard-In-Economy mode, which operates the same as Standard Mode, then reverts to Economy Mode automatically after 1 hour. During this time, a press of the "Mode/Prog" button will revert to Economy Mode immediately.

**Sleep Mode** heats the spa to within 20°F (11°C) of the set temperature only during filter cycles. The "SLEEP" icon will display until mode is changed.

### Standby Mode

Pressing "Warm" or "Cool" then "Massage 2" will turn off all spa functions temporarily. This is helpful when changing a filter. Press any button to exit Standby mode.



**Massage 1** – Press the "Massage 1" button once to turn pump 1 on or off, and to shift between low and high speeds. If left running, the low speed turns off after 2 hours and the high speed turns off after 15 minutes. \*



**Massage 2** – Press the "Massage 2" button once to turn pump 2 on or off, and to shift between low and high speeds. If left running, the pump will turn off after 15 minutes. \*



**Massage 3** – Press the "Massage 3" button once to turn the blower or the third pump (on some models) on or off. If left running, the blower will turn off after 15 minutes. \*

*\*15-minute timeouts may be changed to 30 minutes and 2-hour timeouts may be changed to 4 hours. • Consult your dealer for more information.*

### Indicator Lights

The top indicator light will be lit up if the spa is in its first filter cycle. The next light down will be lit if the spa is in the second filter cycle. The third will be lit when the panel is locked. The bottom indicator will be lit when the temperature lock is enabled.

### Invert

Press the "Warm" or "Cool" button, followed by the "Massage 3" button to change the number in the display to read upside down.



#### Light (Icon) LED Light

Press the "Light" button to turn the spa light on and off. If a LED light system is installed, turning the light off and on again within 1 second will change to the next feature. The LED system has a memory and will return to the last feature selected when light is turned back on.

## Circulation Pump

Your system is equipped with a circulation pump. The circulation pump stays on continuously, regardless of water temperature.

### To change the filter cycle settings:

Press "Time" "Mode/Prog" "Mode/Prog" "Mode/Prog" within 3 seconds. You will see the "Program", "Filter 1" and "Start Time" icons appear on the display.

Press "Warm" or "Cool" to choose the filter start time hour. Enter the hour by pressing "Mode/Prog". Press "Warm" or "Cool" to choose the filter start time minutes. Each press changes the start time by 5 minutes.

Enter the minutes by pressing "Mode/Prog".

Press "Mode/Prog" to see the "Program", "Filter 1", and "End Time" icons. Adjust the time as done above.

## Secondary Filter Cycle Programming

Press "Mode/Prog" to see the "Program", "Filter 2", and "Start Time" icons. Proceed as above.

Press "Mode/Prog" to see "Program", "Filter 2", and "End Time" icons. Adjust the time as done above.

Pressing "Mode/Prog" will enter the new filter cycle times into the system and display the current water temperature.

Pressing "Time" at any time during this programming sequence will save the values entered up to that point and exit programming.

## Setting the Time

Once the spa has been properly connected for the first time, notice the "Time" icon appearing on the screen.

Press "Time" Then "Mode/Prog"

Select the hour by pressing Warm or Cool  
(Each press changes the time by 1 hour)

Press "Mode/Prog" to enter.

Select minutes by pressing Warm or Cool  
(Each press changes the time by 1 minute)

Press "Mode/Prog" to exit the time setting procedure and enter the optional filter cycle programming.

Press "Time" to exit programming.

## Clean-up Cycle *(requires changing dip switch A7 to the on position ask your service center for details)*

When the pump is turned on by a button press, a clean-up cycle begins 30 minutes after the pump is turned off or times out. The pump and the ozone generator will run for one hour.

## Ozone

The ozone generator runs during normal circ pump operation. Your system is configured with the ozone disable feature; the ozone generator will turn off for 1 hour any time a function button (Massage 1, Massage 2, Massage 3, etc.) is pressed.

## Freeze Protection

If the temperature sensors detect a drop to 44°F (approximately 6.7°C) within the heater, then the pump automatically activates to provide freeze protection. The equipment stays on until 4 minutes after the sensors detect that the spa temperature has risen to 45°F (approximately 7.2°C) or higher.

## Locking the Panel (*PL - Indicator Light*)

Press "Time" "Massage 1" then "Warm" within 3 seconds. When locked, the PL indicator light will light. All buttons are frozen except the "Time" button. To unlock the panel, press "Time" "Massage 1" then "Cool" within 3 seconds.

## Locking the Set Temperature (*TL - Indicator Light*)

Press "Warm" or "Cool" then "Time", "Massage 1", and "Warm" within 3 seconds to activate the lock. The TL indicator light will light when the set temperature is locked. To unlock the set temperature, press "Warm" or "Cool" then "Time", "Massage 1" and "Cool" within 3 seconds.

# SPA CREST SERIES 2 MODELS

## Initial Start-up



When your spa is first actuated, it will go into priming mode (after displaying some configuration information). The Priming mode will last for up to 4 minutes and then the spa will begin to heat and maintain the water temperature in the Standard mode. You can exit Priming mode early by pressing "Warm" or "Cool".

### Temp Set (80°F - 104°F / 26.0°C - 40.0°C)

The factory preset temperature is set at 100°F / 37.5°C. The last measured temperature is constantly displayed on the LCD.

*Note that the last measured spa temperature displayed is current only when the pump has been running for at least 2 minutes.*

### Warm / Cool

Press the "Warm"  or "Cool"  button once to display the set temperature. Each time either button is pressed again, the set temperature will increase or decrease depending on which button is pressed. After three seconds, the LCD will automatically display the last measured spa temperature.

### Purge Cycles

Because your unit has a 24hr circulation pump your filter start and stop times do not need to be adjusted. At the start time of each filter cycle your spa will come on for 4 minutes to purge the system. If you wish to change the time that the purge cycle turns on, you need to turn off the power to the spa. Purge cycle will run at 12hr intervals based on when the hot tub was first powered-up. For example: If your spa is powered up at 2:00pm your purge cycle will turn on at 2:00pm & 2:00am. If your spa is inside or very close to a bedroom you may want to change the purge cycle. To change the purge cycle time turn off the power to the spa by tripping the breaker for 1 minute at the time you would like the purge cycle to turn on. Turn the power back on and your spa will be reset.

### Mode

This button is used to switch between standard, economy, and sleep modes. Press "Mode" to enter mode programming, press "Cool" to cycle through to desired mode (LCD flashes until confirmed), then press "Mode" to confirm selection.

**Standard mode** maintains the desired temperature. Note that the last measured spa temperature displayed is current only when the pump has been running for at least 2 minutes. The "Std" icon will display until the mode is changed.

**Economy mode** heats the spa to the set temperature only during filter cycles. The "Ecn" icon will display until mode is changed.

Pressing "Massage 1" while in Economy mode puts the spa in Standard-In-Economy mode, ("SE") which operates the same as Standard Mode, then reverts to Economy Mode automatically after 1 hour. During this time, pressing "Cool" or "Warm" followed by "Light" will revert the mode to Economy immediately.

**Sleep Mode** heats the spa to within 20°F (11°C) of the set temperature only during filter cycles. The "Slp" icon will display until mode is changed.

### Standby Mode

Pressing "Warm" or "Cool" then "Massage 2" will turn off all spa functions temporarily. This is helpful when changing a filter. Press any button to exit Standby mode.



**Massage 1** – Press the "Massage 1" button once to turn pump 1 on or off. If left running, pump will turn off after 15 minutes. \*



**Massage 2** – Press the "Massage 2" button once to turn pump 2 on or off. If left running, the pump will turn off after 15 minutes. \*



**Massage 3** – Press the "Massage 3" button once to turn the blower on or off. If left running, the blower will turn off after 15 minutes. \*

*\*15-minute timeouts may be changed to 30 minutes. Consult your dealer for more information.*



### Light (Icon) LED Light

Press the "Light" button to turn the spa light on and off. If a LED light system is installed, turning the light off and on again within 1 second will change to the next feature. The LED system has a memory and will return to the last feature selected when light is turned back on.

### Circulation Pump

Your system is equipped with a circulation pump. The circulation pump stays on continuously, regardless of water temperature.

### Clean-up Cycle *(requires changing dip switch A7 to the on position)*

When the pump is turned on by a button press, a clean-up cycle begins 30 minutes after the pump is turned off or times out. The pump and the ozone generator will run for one hour.

### Ozone

The ozone generator runs during normal circ pump operation. Your system is configured with the ozone disable feature; the ozone generator will turn off for 1 hour any time a function button (Massage 1, Massage 2, Massage 3, etc.) is pressed.

### Freeze Protection


If the temperature sensors detect a drop to 44°F (approximately 6.7°C) within the heater, then the pump automatically activates to provide freeze protection. The equipment stays on until 4 minutes after the sensors detect that the spa temperature has risen to 45°F (approximately 7.2°C) or higher.

# SPA CREST SERIES 1 MODELS

## Initial Start-up

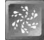
When your spa is first powered up, it will automatically heat and maintain 100°F/37.5°C until you change the set temperature.

## Temperature Adjustment (60°F - 104°F / 26.0°C - 40°C)


Press the  pad to display the temperature previously set. This set temperature is flashed on the display. In a few seconds, the numbers will stop flashing, and the display will show the actual water temperature. Pressing the pad a second time will cause the set temperature to increase or decrease by 1° depending on what direction was last chosen. Each press will change the set temperature in the same direction. From 80°F - 60°F/26.0°C - 40°C, the set temperature range is in 5° increments.

If the opposite direction is desired, release the pad and let the display revert to the actual water temperature again. Press the pad to display the set temperature, and again to make the temperature change in the desired direction.



## Jets Control

Press the  pad once to turn on the pump's low speed and the ozone generator. Press again to run the pump's high speed. Press the pad a final time to turn off the jets. The pump's low speed and the ozone generator turn off after 2 hours. The pump's high speed turns off after 15 minutes. When the heater is turn on, the pump and the ozone generator are automatically activated. If activated in this way, neither can be turned off with the function pad; however, the pump's high speed may be started.




## Light

Press the  pad to turn on the spa light on and off. If left on, the light will automatically turn off after 4 hours of operation.

## Standby Mode

The spa can be disabled when the filter needs to be replaced. To put the system in standby mode, press the  pad then the  pad and the display will show "Sb". All spa functions are disabled except for freeze control. Press any panel button to resume spa operation.

## Spa Water Maintenance

The first filter cycle begins 1 minute after the spa is energized. The second filter cycle begins 12 hours later. Filter duration is programmable at the topside panel for 2, 4, 6, or 12 hours (shown as "FC"). The default filter time is 2 hours. To program, press the  pad, then the  pad to select the filter duration. Press the  pad again to exit programming. The high speed of the pump will run for 30 seconds at the start of each filter cycle. The low speed of the pump and the ozone generator run during the filter times.

## Freeze Protection


If the high-limit sensor detects 40°F/4.5°C at the heater, then the pump is automatically activated to provide freeze protection. This is a normal spa function; no corrective action is necessary. The equipment stays on until the sensor detects 45°F/7.2°C at the heater. Freeze protection is enabled regardless of the spa's status.

# SPA CREST SERIES LX MODELS

## Initial Start-up


When your spa is first powered up, it will automatically heat and maintain 100°F/37.5°C until you change the set temperature.

## Temperature Adjustment (60°F - 104°F / 26.0°C - 40°C)



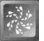
Press the  pad to display the temperature previously set. This set temperature is flashed on the display. In a few seconds, the numbers will stop flashing, and the display will show the actual water temperature. Pressing the pad a second time will cause the set temperature to increase or decrease by 1° depending on what direction was last chosen. Each press will change the set temperature in the same direction. From 80°F - 60°F/26.0°C - 40°C, the set temperature range is in 5° increments.

If the opposite direction is desired, release the pad and let the display revert to the actual water temperature again. Press the pad to display the set temperature, and again to make the temperature change in the desired direction.

## Jets Control

Press the  pad once to turn on the pump's low speed and the ozone generator. Press again to run the pump's high speed. Press the pad a third time and the pump's high speed and the light will run. Press the pad again and only the light will be on. Press the pad a final time to turn off all functions. The light will automatically turn off after 4 hours of operation. The pump's low speed and the ozone generator turn off after 2 hours. The pump's high speed turns off after 15 minutes. When the heater is turn on, the pump and the ozone generator are automatically activated. If activated in this way, neither can be turned off with the function pad; however, the pump's high speed may be started.

## Spa Water Maintenance

The first filter cycle begins 1 minute after the spa is energized. The second filter cycle begins 12 hours later. Filter duration is programmable at the topside panel for 2, 4, 6, or 12 hours (shown as "FC"). The default filter time is 2 hours. To program, press the  pad, then the  pad to select the filter duration. Press the  pad again to exit programming. The high speed of the pump will run for 30 seconds at the start of each filter cycle. The low speed of the pump and the ozone generator run during the filter times.

## Freeze Protection

If the high-limit sensor detects 40°F/4.5°C at the heater, then the pump is automatically activated to provide freeze protection. This is a normal spa function; no corrective action is necessary. The equipment stays on until the sensor detects 45°F/7.2°C at the heater. Freeze protection is enabled regardless of the spa's status.

# DIAGNOSTIC MESSAGES

Message	Meaning	Action Required
	No message on display. Power has been cut off to the spa.	The control panel will be disabled until power returns. Time of day will be preserved for 30 days on your system. Spa settings are preserved on all systems.
OHH	"Overheat" - The spa has shut down. One of the sensors has detected 118°F (approximately 47.8°C).	<b>DO NOT ENTER THE WATER.</b> Remove the spa cover and allow water to cool. Once the heater has cooled, reset by pushing any button. If spa does not reset, shut off the power to the spa and call your dealer or service organization.
OHS	"Overheat" - The spa has shut down. One of the sensors has detected that the spa water is 110°F (approximately 43.3°C).	<b>DO NOT ENTER THE WATER.</b> Remove the spa cover and allow water to cool. At 107°F (approximately 41.7°C), the spa should automatically reset. If spa does not reset, shut off the power to the spa and call your dealer or service organization.
ICE	"Ice" - potential freeze condition Detected	No action required. The pumps will automatically activate regardless of spa status.
SnA	Spa is shut down. The sensor that is plugged into the Sensor "A" jack is not working.	If the problem persists, contact your dealer or service organization. (May appear temporarily in an overheat situation and disappear when the heater cools.)
Snb	Spa is shut down. The sensor that is plugged into the Sensor "B" jack is not working.	If the problem persists, contact your dealer or service organization. (May appear temporarily in an overheat situation and disappear when the heater cools.)
SnS	Sensors are out of balance. If this is alternating with the temperature, it may just be a temporary condition. If the display shows only this message (periodically blinking), the spa is shut down.	If the problem persists, contact your dealer or service organization.
HFL	A substantial difference between the temperature sensors was detected. This could indicate a flow problem.	Check water level in spa. Refill if necessary. If the water level is okay, make sure the pumps have been primed. Check for a dirty filter and clean if necessary. Also check the ozone jets and the return vent in the foot-well for debris blocking water flow. If problem persists, contact your dealer or service organization.
LF	Persistent low flow problems. (Displays on the fifth occurrence of the "HFL" message within 24 hours.) Heater is shut down, but other spa functions continue to run normally.	Follow action required for "HFL" message. Heating capacity of the spa will not reset automatically; you may press any button to reset.
Dr	Inadequate water detected in heater.	Check water level in spa. Refill if necessary. If the water level is okay, make sure the pumps have been primed. Check for a dirty filter and clean if necessary. Also check the ozone jets and the return vent in the foot-well for debris blocking water flow. If problem persists, contact your dealer or service organization. Press any button to reset.
Dry	Inadequate water detected in heater. (Displays on third occurrence of "dr" message.) Spa is shut down.	Follow action required for "dr" message. Spa will not automatically reset; you may press any button to reset.

# DIAGNOSTIC MESSAGES

Message	Meaning	Action Required
Pr	When your spa is first actuated, it will go into Priming mode.	The Priming mode will last for up to 4 minutes and then the spa will begin to heat and maintain the water temperature in the Standard mode.
--F, --C	Temperature unknown.	After the pump has been running for 2 minutes, the temperature will be displayed.
---	Temperature not current in Economy or Sleep mode.	In Economy or Sleep mode, the pump may be off for hours outside a filter cycle. If you wish to see the current spa temperature, either switch to Standard mode or turn Massage 1 on for at least 2 minutes.
Sby	Standby Mode has been activated by pressing a button combination on the user panel.	Press any button to leave Standby mode and return to normal operation.
Std	The spa is operating in Standard Mode.	Temperature display is current after pump has been running for at least 2 minutes.
Ecn	The spa is operating in Economy Mode.	"Ecn" will appear solid on the display when the temperature is not current. "Ecn" will alternate with the temperature when the temperature is current.
SLP	Sleep Mode has been activated by pressing a button combination on the user panel.	"SLP" will appear solid on the display when the temperature is not current. "SLP" will alternate with the temperature when the temperature is current.

## Periodic Reminder Messages (for Vision & Spa Crest Series II only)

*(Press the "Mode" button to reset a displayed reminder)*

Message	Frequency	Action Required
rPH	Every 7 days	Test and adjust pH chemical levels per dealer's instructions.
rSA	Every 7 days	Test and adjust sanitizer chemical levels per manufacturer's instructions.
rCL	Every 30 days	Remove, clean, and reinstall filter per manufacturer's instructions.
rt9	Every 30 days	Test & reset GFCI per manufacturer's instructions.
rdr	Every 90 days	Drain and refill spa per manufacturer's instructions.
rCO	Every 180 days	Clean and condition cover per manufacturer's instructions.
rtr	Every 180 days	Clean spa cabinet.
rCH	Every 365 days	Install new filter.

# STEREO SYSTEM

*Available only on Vision Models*

## **WARNING:**

Never remain in your spa longer than 15 minutes per session when the water temperature is above 98°F/37°C. If you wish to spend more time in your spa, whether enjoying music or just lounging, be sure to keep the spa water at or below body temperature (98.6°F/37°C).

**Sony Remote in wet suit is water resistant. For longevity, do not leave remote floating in spa for extended periods and do not leave outside, exposed to the weather. The Sony Stereo Remote in the wet suit is not covered under the spa warranty.**

## **STEP 1**

To use the pop-up speaker system, press down on the top of the speaker. This will raise the speaker for use. Each speaker rotates to customize the sound.

*\* Please refer to the Sony Stereo Owner's Manual for specific operations. The Stereo System includes a Sony CD/FM Stereo with subwoofer, two pop up speakers, and Sony remote with water resistant wet suit.*

## **STEP 2**

You can control the stereo selections by pointing the remote in the direction of the stereo compartment.

## **STEP 3**

When finished using the stereo speakers, press down on the speaker to lock it in the down position.

***Note:** Do not place wet CD's into the Sony stereo at anytime.*

***Note:** FM/AM channels will be very limited in reception and in most cases be unavailable. An external antenna may increase reception.*

***Note:** Speakers should be in the down position before covering your spa. Failure to do so will result in damage not covered under the warranty.*

***Note:** UV rays may interfere with the operation of the Sony remote. The Sony Stereo is shipped with the detachable stereo face in a plastic bag located under the spa. The stereo face must be inserted to operate any stereo functions. System includes a Sony CD/FM Stereo with two marine grade speakers.*

*\* Please refer to the Sony Stereo Owner's Manual for specific operations.*

# SPA TROUBLE SHOOTING GUIDE

## NOTHING ON THE SPA OPERATES –

- 1.) Check the control panel display for any messages. If there is a message, refer to the diagnostic section on that model spa. There you will find the meaning of the message and what action is to be taken.
- 2.) If there is no message on your control panel, check and reset the GFCI and house breaker. If the spa does not respond, contact your local service company.

## PUMP(S) DO NOT OPERATE –

- 1.) Press the “Massage/Jets” button on your control panel if you hear the pumps trying to operate:
  - A. Check that all the slice valves are open.
  - B. Pump may need to be primed.
  - C. Check that the air controls are open.

*If you do not hear anything from the pump, contact your local service company.*

## POOR JET PERFORMANCE –

- 1.) Make sure pump is operating
- 2.) Check that the water level is adequate
- 3.) Make sure the jets are open and the air controls are open.
- 4.) Check for dirty filters. Clean if necessary.

## SPA NOT HEATING –

*\* If the spas heater has failed, the majority of the time it will trip the GFCI breaker. If the spa is not heating and has not tripped the breaker, please follow these steps:*

- 1.) Check the control panel for diagnostic messages. Refer to your spa models diagnostic message area in previous sections. Follow steps to alleviate message.
- 2.) Check water set temperature at control panel.
- 3.) Check for dirty filters. Clean if necessary.
- 4.) Check “heating mode” the spa is set in. Heat mode should be in “std”.
- 5.) Check the control panel for heater light indicator and / or thermometer icon. If the light is on or the indicator icon is moving, the spa should be heating. Wait a reasonable amount of time (approximately 1 hour) to see if the water temperature is changing.
- 6.) Check to make sure that the pump is primed and all slice valves are open.
- 7.) Reset power to the spa at GFCI breaker.
- 8.) If spa is still not heating, contact your dealer for service.

## GFCI IS TRIPPING –

The Ground Fault Circuit Interrupter (GFCI) is required, by NEC code (National Electrician Code), for your protection. The tripping of the GFCI may be caused by a component on the spa or by an electrical problem. Such electrical problems include, but are not limited to, a faulty GFCI breaker, power fluctuations, or a miswire. It may be necessary to contact an electrician if your local dealer recommends doing so.

*\*The GFCI should be located in a weather proof box close to the spa, but no closer than 5 ft.*

# VISION WARRANTY

**12 Year Structure** – Spa Crest, Inc. warrants the fiberglass spa shell structure against water loss due to defects in materials and workmanship for twelve years from the date of purchase.

**7 Year Surface** – Spa Crest, Inc. warrants the interior surface of the spa against blisters, cracks or delaminations due to defects in material and workmanship for a period of seven years from the date of purchase.

**5 Year Equipment and Plumbing** – Spa Crest, Inc. warrants the equipment (including pumps, blower, heater and the control system) and the plumbing components (including jets, air controls, glued fittings and plumbing) to be free of defects in materials and workmanship for a period of five years from the date of purchase. Light bulbs and filter cartridges are not included, but are warranted to be free from defects in materials or workmanship at the time of delivery to the original purchaser. Spa Crest, Inc. warrants the exterior EON® cabinet and headrests to be free from defects in material and workmanship for a period of 60 days from the date of purchase. Timberstone® acrylic cabinets carry a full 5 year warranty. The stereo components and spa cover have a 1 year warranty.

## Extent of Warranty

The limited warranty applies to all Vision Hot Tubs manufactured by Spa Crest, Inc. Claxton, GA and sold by authorized dealers. The limited warranty applies to the first retail purchaser and terminates upon transfer of ownership. Commercial applications are excluded from all warranty coverage. This limited warranty does not provide coverage for any items attached to, or installed on the spa after the original manufacture date.

## Warranty Performance

In the event of a defect covered under the terms of this limited warranty, notify your authorized Spa Crest dealer. Use all reasonable means to protect the spa from further damage. An authorized Spa Crest service tech will repair the spa subject to the terms and conditions contained in this limited warranty. Within the warranty terms, there will be no charge for parts or labor to repair the defect, although you may be assessed reasonable travel charges for the service call. If Spa Crest, Inc. determines that repairs are not feasible, we reserve the right to provide a replacement spa in lieu of repair. Spa Crest, Inc. will replace with a spa of equal value to the original purchase. In the event, reasonable costs for removal of the defective spa and delivery and installation of the replacement spa will be the responsibility of the owner. Spa Crest, Inc. reserves the right to an on-site inspection by its authorized service representative.

## Exclusions

The limited warranty is void if the Vision spa has been subjected to freeze damage or damage caused by improper water chemistry. This limited warranty is void if the Vision spa has been subject to alterations, neglect, misuse or abuse; if any repairs have been attempted by anyone other than a Spa Crest, Inc. authorized service representative; or if failure is caused by accident, acts of God, or other causes beyond the control of Spa Crest, Inc. Alterations include plumbing changes, electrical conversions, or additions of alternative sanitation or heating systems that contribute to component or unit failure. Neglect, misuse and abuse include any installation, operation or maintenance of the spa other than the outlined in the owner's manual or use for which the spa is not designed. Specifically, damage caused by operation of the spa at water temperature outside the range of 34°F/1°C. and 107°F/41.5°C, damage caused by dirty, clogged or calcified filter cartridges, damage to the spa surface caused by the improper use of chemicals, allowing undissolved spa sanitizing chemicals to contact the surface, damage caused by improper pH balance or other improper water chemistry. Damages caused by failure to provide even or sufficient support for the spa are considered abuses and may void this limited warranty.

## Disclaimers

Spa Crest Inc. or any of its authorized agents shall not be held liable for injury or loss of use of your spa or other incidental or consequential costs, expenses, or damage, which may include but not limited to, the removal of a permanent deck or other custom fixture. In no event shall Spa Crest Inc. be liable for any reason or cause, in excess of the amount paid for the product. No other warranties, expressed or implied are valid. No agent, dealer, distributor, service company or other party is authorized to change, modify or extend the terms of this limited warranty in any manner whatsoever. Some states or countries do not allow the exclusion or limitation of incidental or consequential damages, so the above limitations or exclusions may not apply to you.

Legal right: This limited warranty gives specific legal rights and you may also have other rights that vary from state to state.

# ***SPA CREST WARRANTY***

**10 Year Structure** – Spa Crest, Inc. warrants the fiberglass spa shell structure against water loss due to defects in materials and workmanship for ten years from the date of purchase.

**5 Year Surface** – Spa Crest, Inc. warrants the interior surface of the spa against blisters, cracks or delaminations due to defects in material and workmanship for a period of five years from the date of purchase.

**2 Year Equipment and Plumbing** – Spa Crest, Inc. warrants the equipment (including pumps, blower, heater and the control system) and the plumbing components (including jets, air controls, glued fittings and plumbing) to be free of defects in materials and workmanship for a period of two years from the date of purchase. Light bulbs and filter cartridges are not included, but are warranted to be free from defects in materials or workmanship at the time of delivery to the original purchaser. Spa Crest, Inc. warrants the exterior EON® cabinet and headrests to be free from defects in material and workmanship for a period of 60 days from the date of purchase. Timberstone® acrylic cabinets carry a full 5 year warranty. The stereo components and spa cover have a 1 year warranty.

## **Extent of Warranty**

The limited warranty applies to all Spa Crest Hot Tubs manufactured by Spa Crest, Inc. Claxton, GA and sold by authorized dealers. The limited warranty applies to the first retail purchaser and terminates upon transfer of ownership. Commercial applications are excluded from all warranty coverage. This limited warranty does not provide coverage for any items attached to, or installed on the spa after the original manufacture date.

## **Warranty Performance**

In the event of a defect covered under the terms of this limited warranty, notify your authorized Spa Crest dealer. Use all reasonable means to protect the spa from further damage. An authorized Spa Crest service tech will repair the spa subject to the terms and conditions contained in this limited warranty. Within the warranty terms, there will be no charge for parts or labor to repair the defect, although you may be assessed reasonable travel charges for the service call. If Spa Crest, Inc. determines that repairs are not feasible, we reserve the right to provide a replacement spa in lieu of repair. Spa Crest, Inc. will replace with a spa of equal value to the original purchase. In the event, reasonable costs for removal of the defective spa and delivery and installation of the replacement spa will be the responsibility of the owner. Spa Crest, Inc. reserves the right to an on-site inspection by its authorized service representative.

## Exclusions

The limited warranty is void if the spa has been subjected to freeze damage or damage caused by improper water chemistry. This limited warranty is void if the spa has been subject to alterations, neglect, misuse or abuse; if any repairs have been attempted by anyone other than a Spa Crest, Inc. authorized service representative; or if failure is caused by accident, acts of God, or other causes beyond the control of Spa Crest, Inc. Alterations include plumbing changes, electrical conversions, or additions of alternative sanitation or heating systems that contribute to component or unit failure. Neglect, misuse and abuse include any installation, operation or maintenance of the spa other than the outlined in the owner's manual or use for which the spa is not designed. Specifically, damage caused by operation of the spa at water temperature outside the range of 34°F/1°C. and 107°F/41.5°C, damage caused by dirty, clogged or calcified filter cartridges, damage to the spa surface caused by the improper use of chemicals, allowing undissolved spa sanitizing chemicals to contact the surface, damage caused by improper pH balance or other improper water chemistry. Damages caused by failure to provide even or sufficient support for the spa are considered abuses and may void this limited warranty.

## Disclaimers

Spa Crest, Inc. or any of its authorized agents shall not be held liable for injury or loss of use of your spa or other incidental or consequential costs, expenses, or damage, which may include but not limited to, the removal of a permanent deck or other custom fixture. In no event shall Spa Crest, Inc. be liable for any reason or cause, in excess of the amount paid for the product. No other warranties, expressed or implied are valid. No agent, dealer, distributor, service company or other party is authorized to change, modify or extend the terms of this limited warranty in any manner whatsoever. Some states or countries do not allow the exclusion or limitation of incidental or consequential damages, so the above limitations or exclusions may not apply to you.

Legal right: This limited warranty gives specific legal rights and you may also have other rights that vary from state to state and country to country.



## Warranty Registration

Purchasers Name \_\_\_\_\_

Purchasers Address \_\_\_\_\_

\_\_\_\_\_

Date of Purchase \_\_\_\_\_

Serial # \_\_\_\_\_ Model \_\_\_\_\_

Dealer Name \_\_\_\_\_

Dealer Address \_\_\_\_\_

\_\_\_\_\_

Please fill out form and send it along with a copy of your invoice to:

Spa Crest Inc.  
5989 Highway 129 South  
Claxton, GA 30417



Spa Crest Inc.  
5989 Highway 129 South  
Claxton, GA 30417  
912-739-7137

[www.spacrest.com](http://www.spacrest.com)  
[www.visionhottubs.com](http://www.visionhottubs.com)



5989 Highway 129 South  
Claxton, GA 30417